



SIDE SCAN SONAR SharkSSS450D

The SharkSSS450D Side Scan Sonar (CW/CHIRP) provides a unique conventional dual frequency 450/900 kHz side scan system that combines low cost and digital technologies used in the Single Beam Series Side Scan System into one unit.

450D System consists of a 450D towfish, cable capstan, connect box and sonar workstation (SharkPRO® sonar software on Windows XP® or Win7).

Basic Modules: Main Program, Data Display, Target Management, Navigation, Data Recording & Playback, and Sensor Display.

Multiple Display Windows: Permits multiple windows to view different features as well as targets in real time or in playback modes. Multi-windows for sonar contain data channels, navigation, sensors, status monitors, targets, etc.

Features:



- 450 & 900 kHz dual simultaneous frequencies
- Very high resolution and long range images
- 450 meter depth rating for towfish
- CW&Chirp signal processing
- Built-in Heading/Pitch/Roll Sensor
- Able to interface with customer supplied PC and 3rd party software
- Pressure sensor

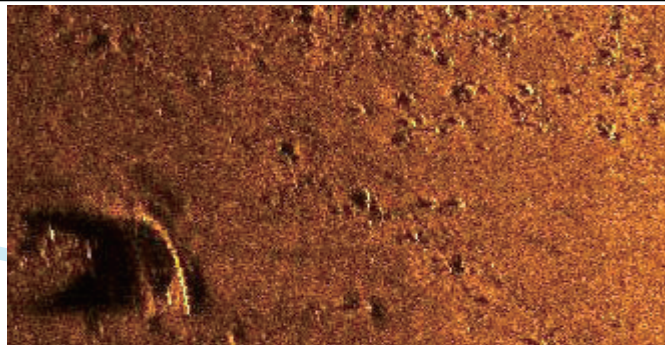
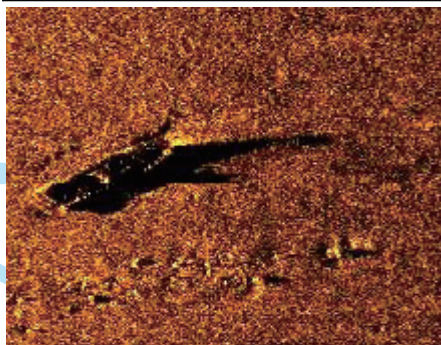
Applications:

- Mine Countermeasures (MCM' s)
- Geo-hazard surveys
- Geological/geophysical surveys
- Route surveys
- Archeological surveys
- AUV/ROV adaptable search and recovery



Technical Data

SPECIFICATIONS	
Towfish	
Frequencies	450kHz,900kHz
Pulse Width	20~500us
Beam Width	Horizontal: 0.3° @ 450kHz, 0.15° @ 900kHz; Vertical: 40°
Signal Type	CW/LFM
Range Scales	25m,50m,75m,100m,125m,150m
Maximum Range	150 meters @ 450kHz; 100 meters @ 900kHz
Resolution	Lateral:1.25cmVertical:0.0026h(h:range)
Working Depth	450m
Power	Maxium 30W
Accessary Sensors	Roll, pitch, heading, height, depth
Cable Capstan	Length: 50m
Connect Box	Power:30W/220VAC(24VDC)
Weight	22KG
Size	1200mm*105mm(L*D)
Sonar Workstation	
Basic Operating System	Windows XP®/Win7
Sonar Software	OTech®
Data Format	OTSS or XTF or both, selectable
Navigation Input	NMEA 0183
Interface Unit	
Volatge	220VAC/24VDC
Output	100M ethernet
Size/Weight	172mm*122mm*72mm/0.85KG
Winch and cable	
Tow	50mKevlar Strengthen cable
Winch	Hand-operated or electric
Size/Weight	370mm*300mm*310mm/31kg



Notes: Specifications could be changed without notice in advance.
Please consult local agency or manufacture for more details or updates