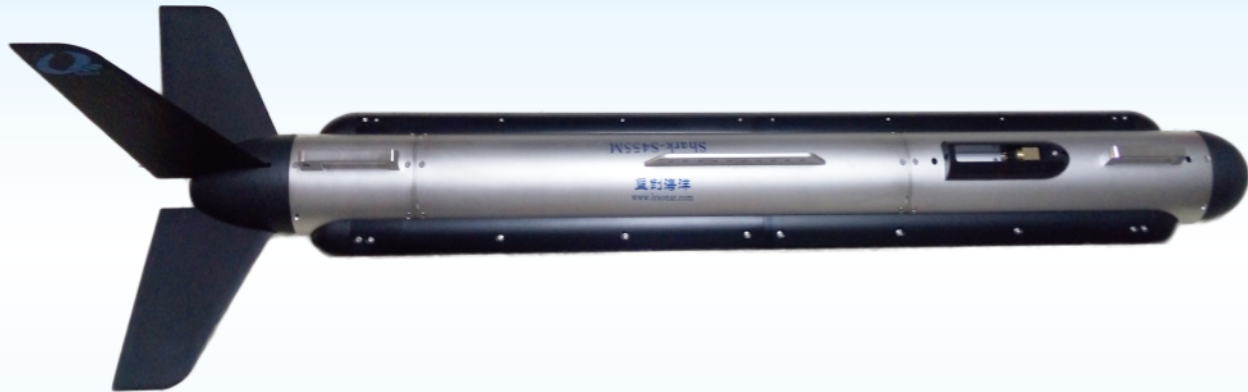




# Shark-S455M Multibeam Sonar

[www.lcsonar.com](http://www.lcsonar.com)



M series multibeam side scan sonar has two modes of use, low speed and high speed, which can be chosen by users according to their needs. In low speed mode, single beam dual-frequency side scan can be processed, and in high speed mode, multibeam high-frequency side scan can be processed (10 beams for two lateral sides). Different from the conventional side scan, the system adopts advanced dynamic focusing beam technology to greatly improve the along-track image resolution of middle and close range. The adoption of multibeam technology can greatly improve the efficiency of surveying and mapping. The perfect combination of the two technologies can achieve high speed and high resolution.

A strong stainless steel tow fish, a high strength Kevlar cable, a waterproof deck unit and the customized OTech® software are included in the sonar system which designed with ultra-low power consumption and can be powered with both AC and DC power.

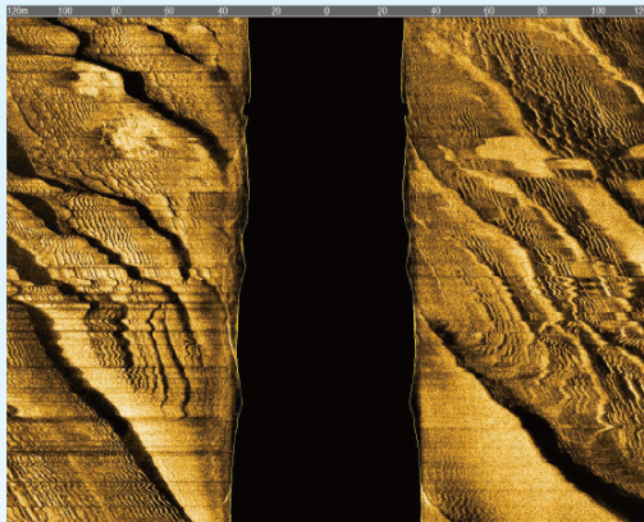
OTech® software is equipped with the function of sonar image display, navigation, data recording & replay, target management & output and sensor information multi-window display. It can output the data with standard formats which can be processed with the third party processing software and also can be customized according to the requirements.

## Features

- Dynamic focusing ,enhanced resolution
- Broadband CHIRP technology
- High speed mode and low speed mode
- Speed up to 10 knots
- Build-in sounding module
- OTech® acquisition software

## Applications

- Hydrographic Surveys
- Geophysical Surveys
- Cable and Pipeline Surveys
- Dredging Surveys
- Pier/Harbor Wall Inspections
- AUV/ROV Integration



Beijing Lcocean Science and Technology Co., Ltd.

Add: Room 1703, Jin Yanlong Building, Xisanqi Street, Changping District, Beijing 100096, China

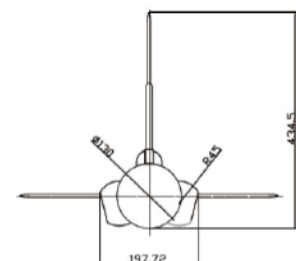
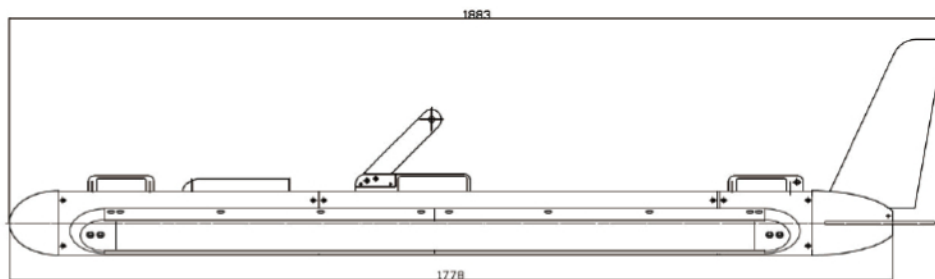
Tel: +86-10-60789808 /+86-18998389785 Email: [oceansuv@163.com](mailto:oceansuv@163.com) <http://www.lcsonar.com>



# Shark-S455M Multibeam Sonar

www.lcsonar.com

Sonar Specifications	Shark-S455M	Shark-S455UM
Beams	10 (both sides)	
Frequency	455kHz (High speed mode); 100kHz&455kHz(Low speed mode)	
Pulse Type	CW: 20-1000us; LFM:0.5ms-6ms	
Maximum Range	600m@100kHz; 200m@455kHz	
Beam Width	Horizontal: 0.56°@100kHz,0.14°@455kHz; Vertical: 45°	
Resolution(h-range)	Along track: 0.002h@455kHz, 0.01h@100kHz Across track: 1.25cm	
Depression Angle	Tilted down 15°	
Depth Rating	1000m(316 stainless Steel)	100m(Aluminum)
Towfish Size/Weight(air)	1883mm*130mm(length*D)/45kg	1778mm*130mm(length*D)/30kg
Deck Unit Size/Weight	170mm*120mm*70mm /0.8kg	
Power Consumption	220/110VAC, 50W	
Software OTech®	Windows, NMEA 0183 Navigation Data Input OTSS, XTF Output Data Format	
Tow Cable	Kevlar, standard length: 50m	Kevlar, standard length: 5m
Standard Towfish Sensors	roll, pitch, heading, depth, altitude	
Operating Speed	2-10knots (High speed mode); 2-6knots(Low speed mode)	



Beijing Lcocean Science and Technology Co., Ltd.

Add: Room 1703, Jin Yanlong Building, Xisanqi Street, Changping District, Beijing 100096, China

Tel: +86-10-60789808 /+86-18998389785 Email: oceansuv@163.com <http://www.lcsonar.com>