



## ML-SL90-10 Sector Light

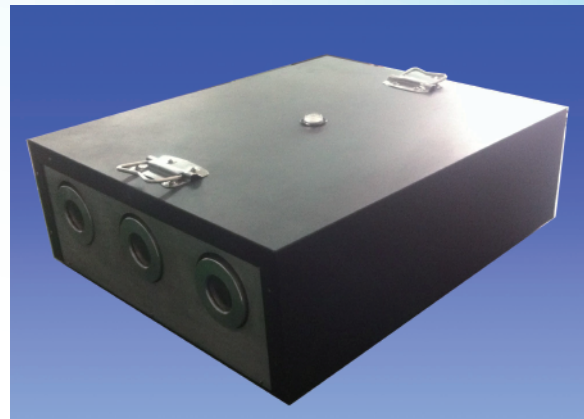
ML-SL90-10 LED Sector Light is a newly developed low power high intensity LED sector Light with color of white, red and green. Patent optic design makes the light achieve: power less than 4W, range up to 16 nm (white, T=0.74).

### Features & Benefits

- Super bright LED save energy
- Suit equip with solar power
- Line controller set range and rhythm / No need to open lantern
- Aluminium alloy base with special treatment suits marine environment
- Light weight and easy installation
- Patent optic design insure high light efficiency
- Computer chip control achieve high reliability
- Pass EMC test

### Specifications

- Light source: Super bright high power LED
- Input voltage: DC12V (10~16V)
- Vertical / horizontal divergence: 0.1-3° (I50%) as required for different color\*
- Sun switch: 250±50 lx with adjustable circuitry
- Flash rhythm: 256 rhythms site selectable
- Idling current: ≤4mA
- Temperature: -35°C ~ +55°C
- Protection: IP66
- Dimension: L700mm/W240mm/H240mm
- Installation: 3 and 4-Φ17 on 200mm bolt circle
- Angle adjust (precise to 0.01°): Vertical 10°/ horizontal 20°
- Weight: 15kg



### Intensity & Range

Color	Range select	Power	Max intensity	Range (T=0.74)	1S intensity	Range (T=0.74)
Red	1	0.6W	2000cd	10.8nm	1667cd	10.4nm
	2	3.2W	10000cd	14.3nm	8333cd	13.8nm
	3	6W	30000cd	16.8nm	25000cd	16.5nm
Green	1	0.7W	2000cd	10.8nm	1667cd	10.4nm
	2	2.1W	10000cd	14.3nm	8333cd	13.8nm
	3	3.48W	30000cd	16.8nm	25000cd	16.5nm
White	1	0.36W	2000cd	10.8nm	1667cd	10.4nm
	2	1.8W	10000cd	14.3nm	8333cd	13.8nm
	3	3.8W	45000cd	17.8nm	37500cd	17.3nm

#### Notes:

- \* Divergency can be fixed according to requirement, but no change can be made afterwards
- ☆ Please indicate when purchase if you need GPS synchroflash or remote control.
- ☆ Specifications can be changed without notice in advance