



## MC-208E "Easy Installation" Monitoring and Control Unit

MC-208E "Easy Installation" Monitoring and Control Unit is suitable for difficult circumstances and fast installation. Easy connection and dis-connection with high reliability and low running cost.

### Features:

- Built-in GPS, GSM antenna, more easier installation, water- proof, suitable for field installation on buoys
- Inductive measuring with independent power supply, no influence on lights nor sun battery-charging
- Limited connection lines, using wireless sensor network for communications or power line carrier transfer of the data and status of light.
- No setup required before installation, easy running and management.
- Built-in thunder-defense electromagnetic compatibility and anti-jamming design

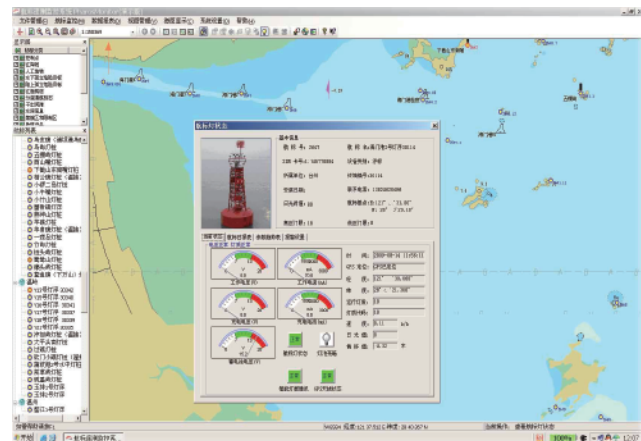


### Functions:

- Transmission of AtoN status and data at a fixed period of time
- Remote monitoring: GPS location, battery voltage, light current and on/off status
- Can set up electronic enclosure, auto-alarming when floating out of limits, lost or light abnormal, lower battery etc.
- Interface: standard 485/232 and mod

### Specifications:

- Working voltage: 6-28V (specific 12VDC)
- Power: 0.5 W max
- Serial interface: RS-232 or 485
- Shell: UV Anti-aging ASA, IP 68 protection grade
- Size:
  - External: dia 125mm height: 60mm
  - Internal : dia: 85mm height: 30 mm
  - Internal wireless sensor: 25x25x10mm
- Storage temperature: -30- 85 Deg C
- Working temperature: -15 – 70 Deg C.



- ☆ Please indicate when purchase if you need GPS synchroflash or remote control.
- ☆ Specifications can be changed without notice in advance